

Installation



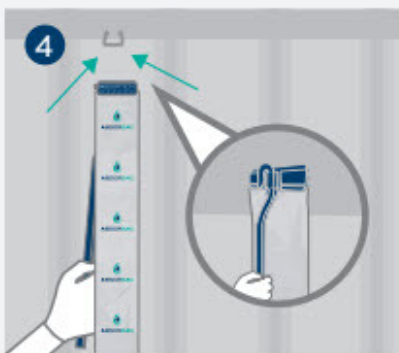
1 Activate the Absorbag by opening the transparent outer plastic packing and taking out the Absorbag. Be careful not to cut into the Absorbag.



2 Take out the Absorbag from the transparent plastic packaging.



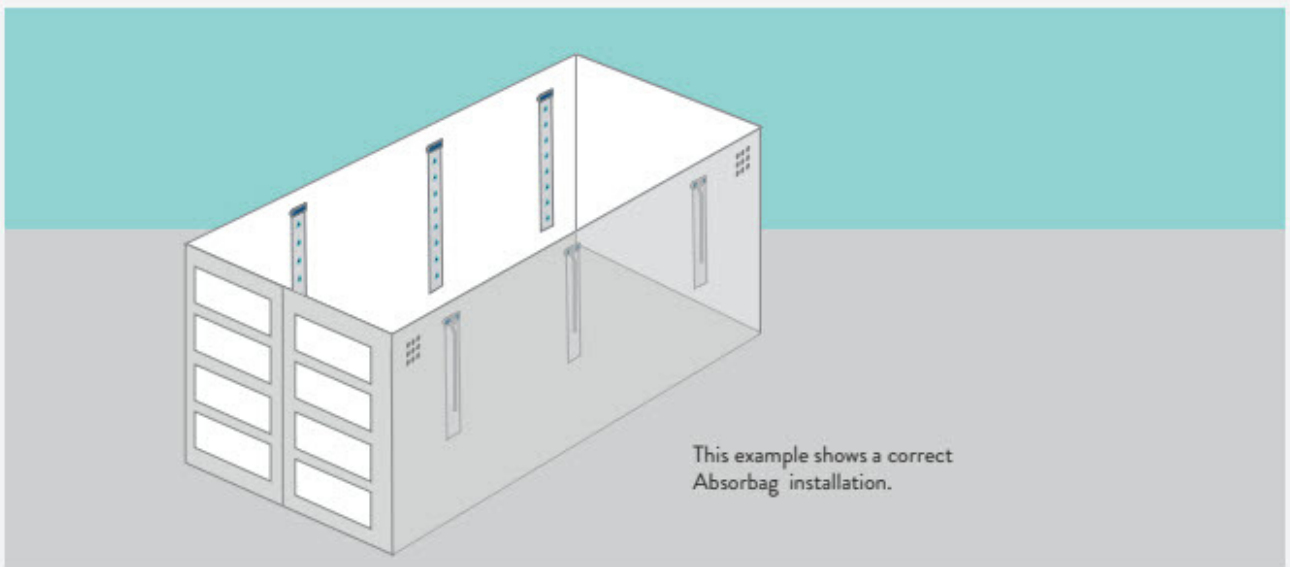
3 Fit the hook on the back (non-printed side) by pushing it up into the slot.



4 Use the hook to reach the container lashing ring.



5 Hang the Absorbag on the container lashing ring until it clicks and locks into position.



This example shows a correct Absorbag installation.

Disposal

Absorbag is a single-use product and can be disposed as regular waste. The calcium chloride and gelling agent are non-toxic and the polyethylene (PE) and polypropylene (PE) plastics are recyclable.

Safety

Calcium chloride brine is non-toxic and non-corrosive. It is similar to very salty seawater. In case of contact flush eyes with fresh water. Rinse exposed areas of skin with fresh water. Pro-Ex recommend using gloves and goggles when handling.

