

## STRONG AND DURABLE ADJUSTABLE LENGTH INDICATIVE SECURITY SEAL

Versatile premium heavy duty tamper evident security seal with metal locking designed for various applications requiring a strong and durable fit.

### Features:

- Designed to be suitable for a wide range of applications
- Double-sided locking teeth that provides greater security
- Numbered strap to indicate sealing position
- Stainless Steel metal clip provides a high level of security
- Heat staking technology used to secure locking chamber and cap
- Brittle cap that cracks upon tampering, providing visual evidence
- Laser etched markings with unique Serial Number and Barcode
- Fully customisable with unique artwork and variety of barcodes

## ADDITIONAL FEATURES



Reinforced Entry



Numbered Tail

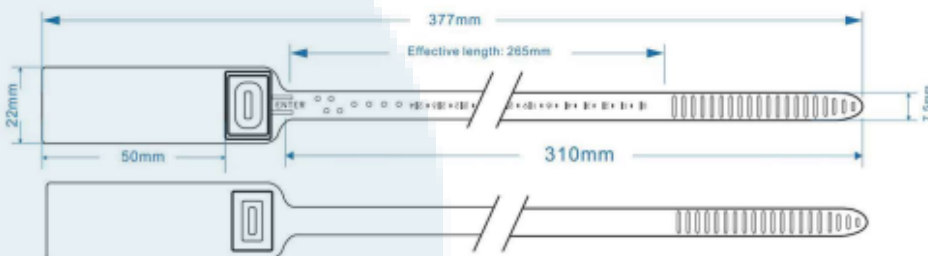


Brittle Cap



Heat Staking

## PRODUCT DRAWING



### Packaging Information

1000pcs per Carton  
490mm x 250mm x 250mm, 5.5kgs

## TECHNICAL SPECS

**Tensile Strength** 38.0 kgs

**Body** Polypropylene

**Cap** Acetal

**Locking** Spring Metal Plate

### Total Length / Locking Length

377mm / 265mm

### Customisation Options

- Customer name and corporate logo
- Customised text and artwork
- Up to 13 digits sequential numbering
- 2D / QR technology barcode

## INDUSTRIES

Banking • Transportation • Cash In Transit • Government • Retail • Pharmaceutical & Healthcare • Food Services • Manufacturing & Packaging • Education • Mining

## APPLICATIONS

Cash and Coin Bags • Pouches • Bulk Tankers and Trailers • Tote Boxes • Mail Bags • Ballot Boxes • Roll Cages • Plastic and Cloth Bags • Trailer Curtain Buckles • Hatches • Inner Drum Bags

### Available Colours

